

WETLANDS INVERTEBRATE SPOTTER



Ireland has an incredible amount of invertebrates. An invertebrate is an animal with no back bone which are our insects. Tralee bay is a haven for these small creatures as we do not use insecticides on the ground. Our growing number of trees offer a food source and new pollinator friendly gardens offer loads of food for them as well. Search your garden for some of these species. Look in the trees, in your veg plot and in the grass.



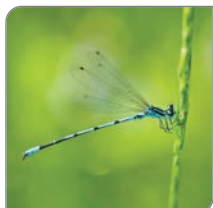
Green Shieldbug
Palomena prasina



Tortoise Shieldbug
Eurygaster testudinaria



Emperor Dragonfly
Anax imperator



Common Blue Damselfly
Enallagma cyathigerum



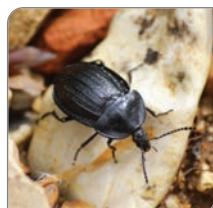
White Ermine Moth
Spilosoma lubricipeda



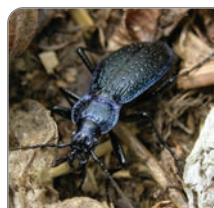
Red Admiral
Vanessa atalanta



Small Tortoiseshell
Aglais urticae



Black Snail Beetle
Silpha atrata



Violet Ground Beetle
Carabus problematicus



German Wasp
Vespa germanica



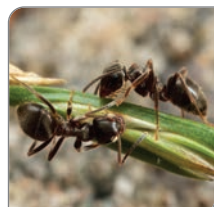
Footballer Hoverfly
Helophilus hybridus



Red Tailed-Bumblebee
Bombus lapidarius



Buff-Tailed Bumblebee
Bombus terrestris



Black Garden Ant
Lasius niger



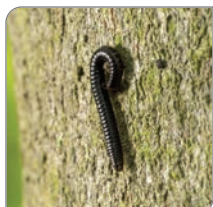
Cross Spider
Araneus diadematus



Common Earwig
Forficula auricularia



Garden/Stone Centipede
Lithobius forficatus



White-Legged Snake Millipede
Tachypodoiulus niger



Woodlice
Oniscus asellus



Pill Bug
Armadillidium vulgare





COLOURING ACTIVITY SHEET

